

EDUCATION SAFEGUARDING ADVISORY SERVICE (ESAS)

safeguardineducation@buckscc.gov.uk

01296 382912.

Contacts

Education Safeguarding Advisory Service

Advice Service: 01296 382912

Team Manager/Education Safeguarding Advisor

Therese McAlorum 01296 382732

Safeguarding Officers:

Julia Goodes 01296 382822

Julia White 01296 382828

Tracey Ireland 01296 32817

01296 383703

The Local Authority Designated Officer (LADO) 01296 382070

Business Support:

Jackie Kelly 01296 382912

jackelly@buckscc.gov.uk

Referrals to Social Care

First Response Team:

0845 4600 001

Out of Hours: (Emergency Duty Team)

0800 999 7677

BSCB

www.bucks-lscb.org.uk

01296 383485

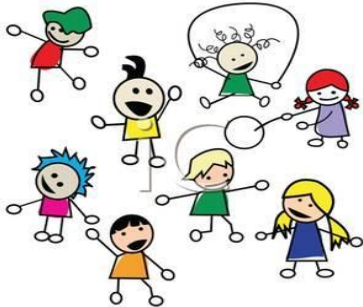


SIGNS AND INDICATORS OF ABUSE

IDENTIFYING CHILD ABUSE

Identification of child abuse is difficult. As well as the indicators given below, consider the following:

- Always listen carefully to the child, particularly to what is said spontaneously.
- Record carefully what the child has said and how and when the account was given. If you need to ask questions use **TED: TELL, EXPLAIN, DESCRIBE**. Record them and any response. Retain original notes; they may be needed in court.
- Beware of any failure or delay by adults in seeking medical assistance for the child.
- Beware of vague explanations which are lacking in detail.
- Beware of explanations that are inconsistent with what you observe or know, especially of the child's development and mobility.
- Take note of any inappropriate responses from adults who are involved in the care of the child.
- Note if there is any history or pattern of unexplained injury, illness or absenteeism.
- Remember that when the care of an abused child has been shared between parents and others the source of the abuse can be more difficult to determine.



Indicators may include the following-this however is not an exhaustive list and any concerns should be reported to the DSL.

Indicators of PHYSICAL ABUSE

Bruises:

- To the eyes, mouth or ears
- Fingertip bruising (grasp mark)
- Bruises of different ages in the same place
- Outline bruises (prints of hands, belts, shoes, etc.)
- Bruises without obvious and verifiable explanations
- Bruises to non-mobile babies should always be referred to Children's Social Care
- Unexplained bruising, e.g. where the skin does not cover a bony area i.e. stomach, back, under arms or inner thigh.

Burns, bites and scars:

- Clear impressions of teeth (more than 3cms across unlikely to have been made by a child)
- Burns or scalds with clear outlines
- Small round burns which may be from cigarettes
- Large numbers of different aged scars
- Unusual shaped scars
- Scars that indicate the child did not receive medical treatment

Fractures:

Alleged unnoticed fractures – fractures cause pain and it would be difficult for a carer to be unaware of the child's distress at the time of injury – HOWEVER fractures in young children heal quickly and babies may be able to use a fractured limb without pain within a few days, this may mask a healing fracture.

Other injuries:

- Poisoning, injections, ingestion or other applications of damaging substances (including drugs and alcohol).
- Female genital mutilation, including female circumcision.

Signs of shaking, including

- facial petichiae (small blood spots)
- black eyes

Indicators of NEGLECT:

Children who are:

- Not receiving adequate food consistent with their potential growth
- Exposed through lack of supervision to injuries, including ingestion of toxic substances
- Exposed to inadequate, dirty and/or cold environments
- Abandoned or left in circumstances without appropriate adult supervision which are likely to endanger them
- Prevented by their carers from receiving appropriate medical advice or treatment

Indicators of SEXUAL ABUSE:

- Sexual transmitted diseases
- Recurrent urinary infections
- Genital and rectal itching and soreness
- Unexplained bleeding and discharges
- Bruising in the genital region
- Sexual play/masturbation that is judged to be inappropriate to a child's age, development and circumstances
- Sexually explicit behaviour
- Young children with an inappropriate level of sexual knowledge
- Sexual abusive behaviour towards other children, particularly those younger or more vulnerable than themselves
- Unexplained pregnancy

Indicators of EMOTIONAL ABUSE:

- Abnormally passive, lethargic or attention seeking behaviour
- Specific habit disorders e.g. faecal smearing, excessive drinking, eating unusual substances, and self-harm
- Severely delayed social development, poor language and speech development not otherwise explained
- Excessively nervous behaviour such as rocking or hair twisting
- Low self esteem
- Subjected to/viewing/hearing domestic violence
- Demonstrate high levels of anxiety, unhappiness or withdrawal.